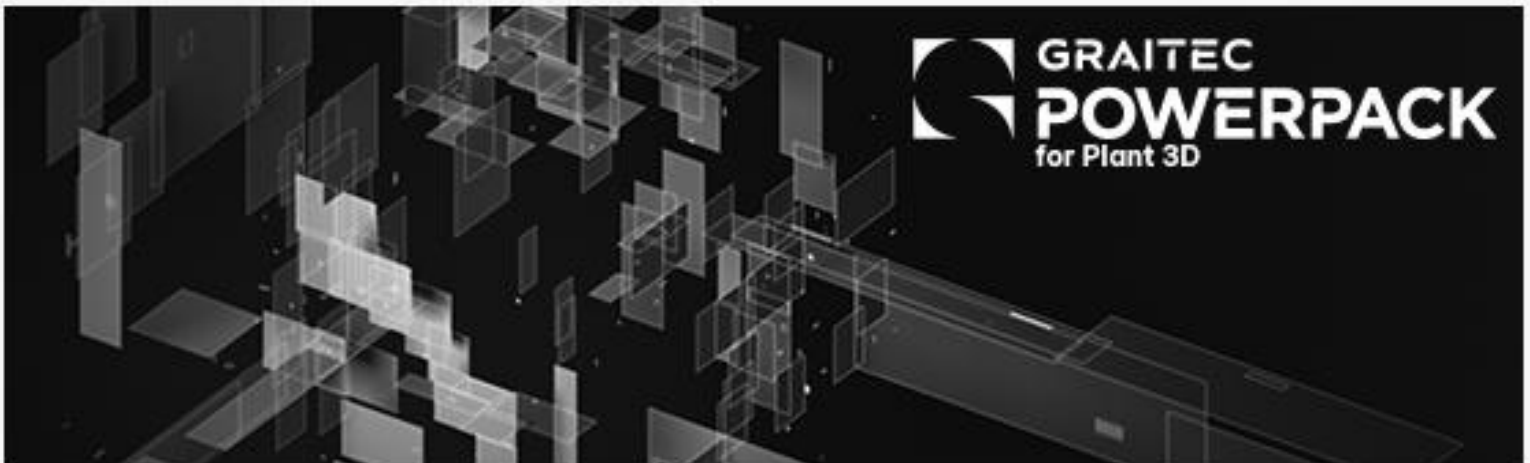




# What's New

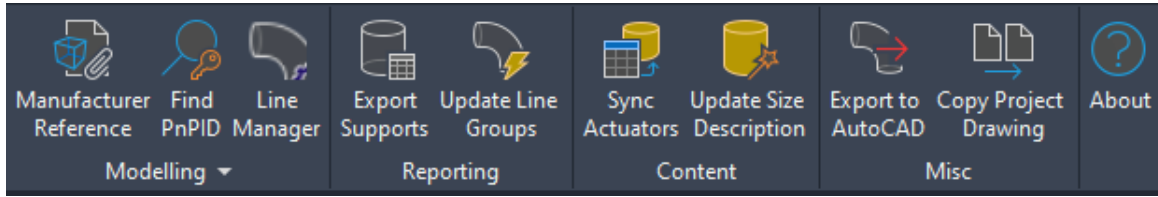
## PowerPack for Plant 3D 2025



# Table of Contents

|   |   |   |
|---|---|---|
| 1 | Introducing PowerPack for Plant 3D 2025 ..... | 3 |
| 2 | .NET 8 Migration .....                        | 4 |
| 3 | Export to DWG Improvements .....              | 5 |
| 4 | Sheet Numbering .....                         | 6 |
| 5 | Export Pipe Support Auto-Naming.....          | 7 |
| 6 | Copy Drawings improvements .....              | 8 |
| 7 | Line Manager Layer Colour Overrides .....     | 9 |

# 1 INTRODUCING POWERPACK FOR PLANT 3D 2025



We are very pleased to introduce the latest version of the PowerPack for Plant 3D 2025. This latest update brings features and enhancements regarding plant design workflow, The release of PowerPack for Plant 3D 2025 introduces enhanced features like the Copy Project Drawings tool, a powerful tool for plant designers and process engineers.

This enhancement promises to speed up your work by seamlessly reusing existing design data from other projects, making project copying and model transfers more efficient than ever. Our goal is to keep improving PowerPack for Plant 3D functionality and usability, and we believe this update will be a valuable addition for our users.

## 2 .NET 8 MIGRATION

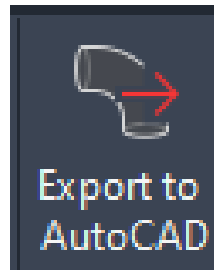
Autodesk Plant 3D 2025 is transitioning to a new software development platform, Microsoft .NET 8, for improved performance and cross-platform compatibility. Consequently, the PowerPack for Plant 3D 2025 is also being updated to .NET 8 to ensure the smooth operation of our plugin and to avoid performance issues.



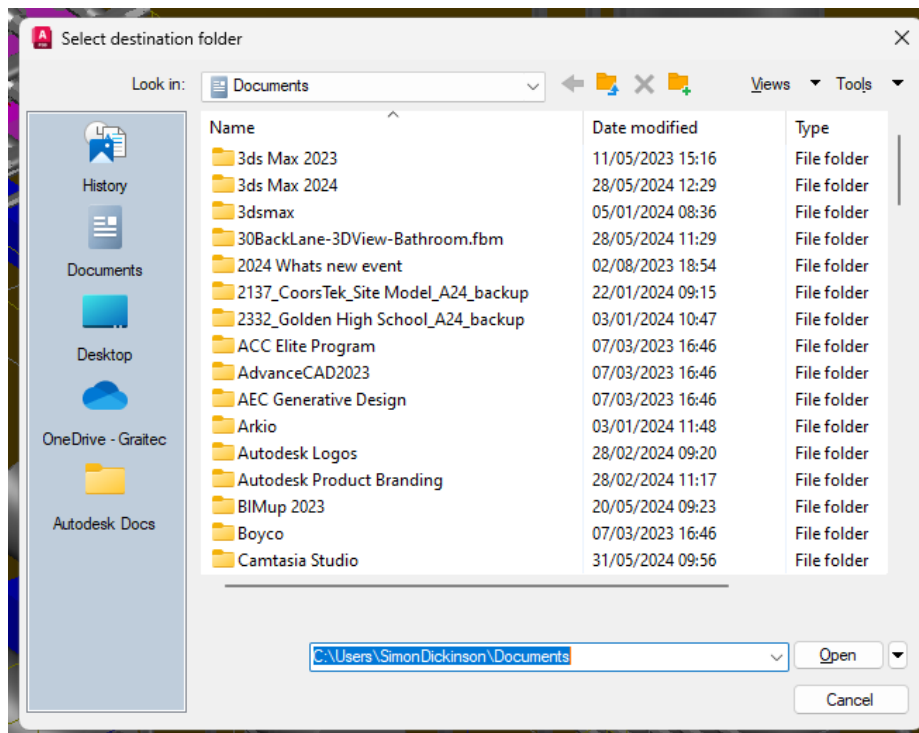
.NET 8

Both Autodesk Plant 3D and the PowerPack for Plant 3D are benefiting from increased speed and performance.

### 3 EXPORT TO DWG IMPROVEMENTS

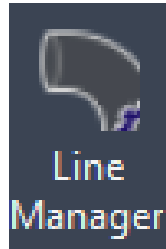


The Export to AutoCAD command has been improved. This tool was designed to create native DWG file that could be read by any software capable of reading a DWG without the need for an Object enabler. These files were placed in the same folder and subfolders as the original Plant 3D models. In PowerPack for Plant 3D 2025 we now have the option to specify the location for the exported drawings.

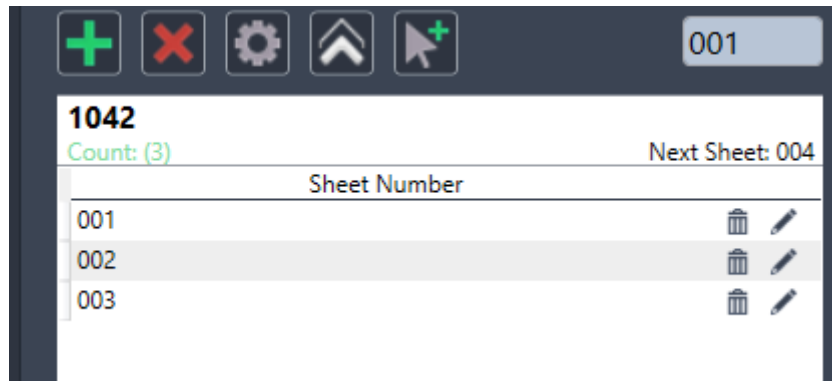


All the exported drawings are now in the same place and are easy to package and send to the relevant parties.

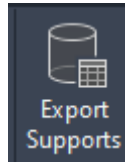
## 4 SHEET NUMBERING



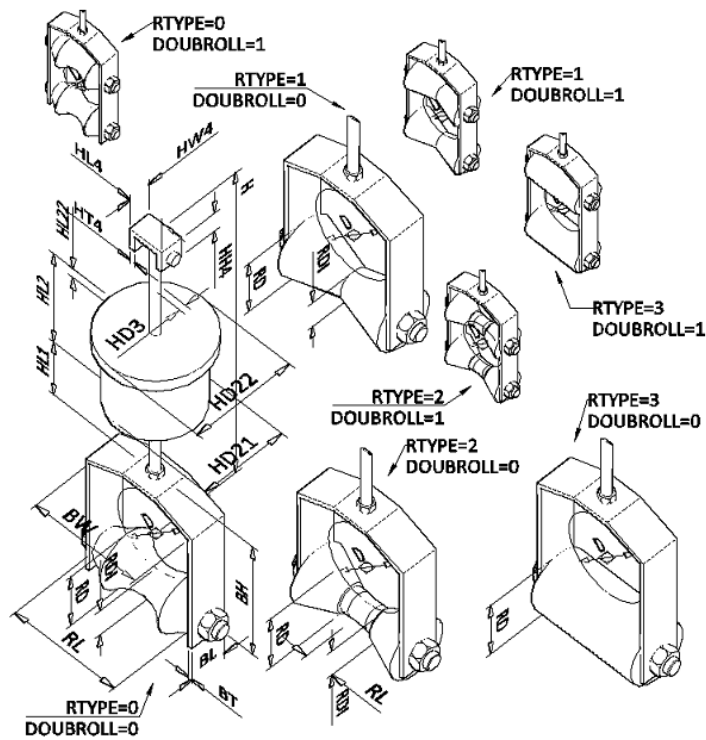
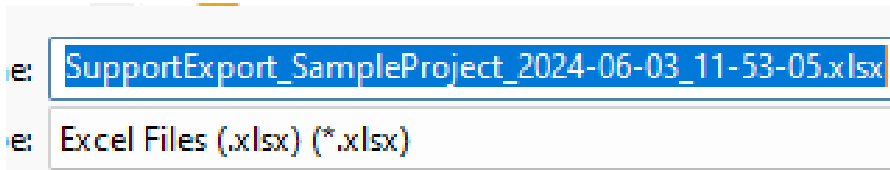
Line Manager now supports preceding '0's in sheet numbering. Previously this was not possible. Simply typing 1 in the sheet number dialogue will automatically generate 001 as the sheet number. Consecutive sheets will automatically be numbered with preceding '0's.



## 5 EXPORT PIPE SUPPORT AUTO-NAMING

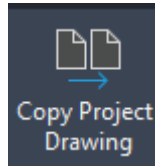


Previously when you ran the command to export your pipe supports, PowerPack for Plant 3D would automatically name the file Export Supports.xlsx. This tool has now been improved and now adds the Project Name, Date and Time to the name of the export. This saves time when creating and managing the export of the Pipe Support fabrication data.

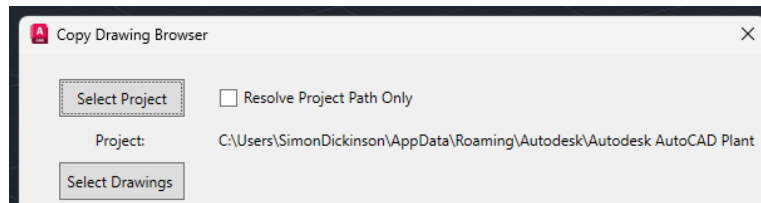


The exported Excel file contains all the fabrication Data including thumb names where available.

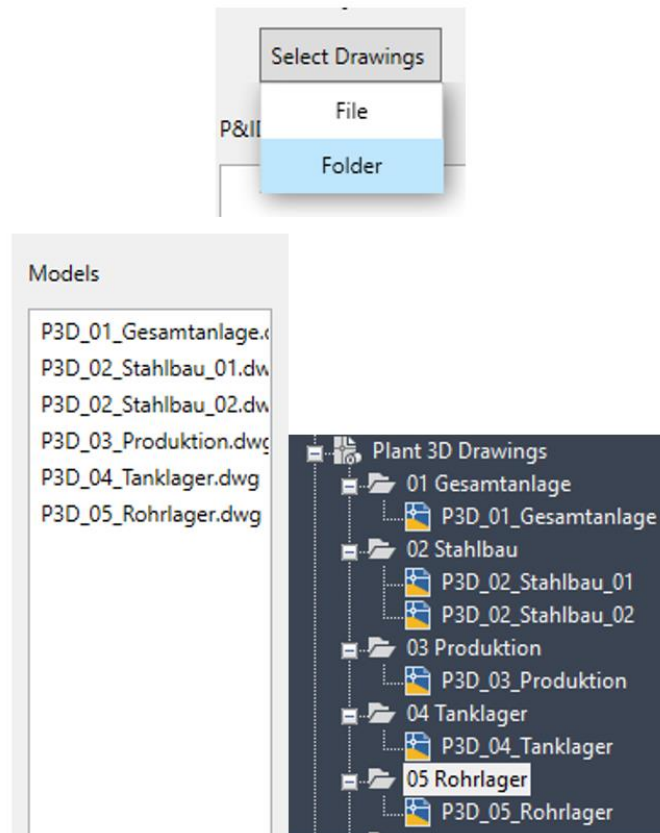
## 6 COPY DRAWINGS IMPROVEMENTS



Copy Project Drawings is a great tool for utilising existing Drawings from Previous projects. Previously you could add all files by linking to the Project .xml file.



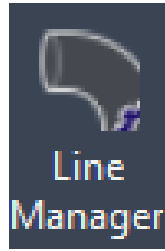
Or individual P&ID's, Models, Orthos and Isometrics. This could be time-consuming if the files needed were located in subfolders. In PowerPack for Plant 3D 2025, it is now possible to select a folder. Selecting a folder will automatically select all drawing from that folder and any subfolder below it.



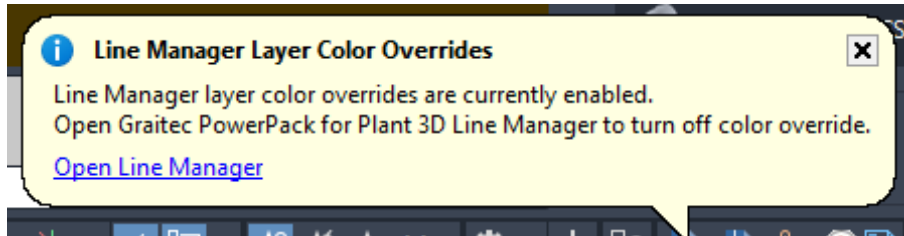
If the Drawings were found to be in subfolders these will be recreated in the Plant 3D Project when the import is completed. An excel file is also generated to let you know if the Copy Drawing was successful. Currently, you cannot copy Imperial Drawing to Metric Projects and vice versa.



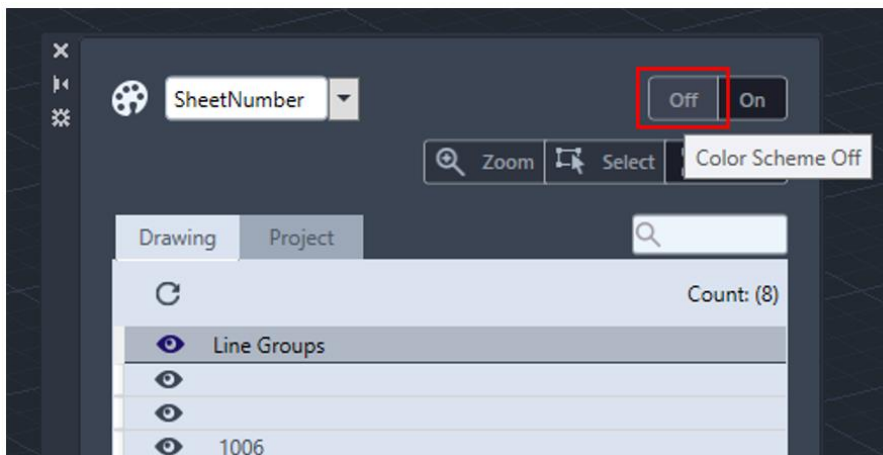
## 7 LINE MANAGER LAYER COLOUR OVERRIDES



Line Manager uses a layer colour override to help identify which sheet number has been assigned to each section of the line groups. The issue is you may not be expecting to see the displayed colours. PowerPack for Plant 3D 2025 now displays a clear message if the overrides are enabled.



The user can now choice to ignore this message by closing it. Clicking the blue text to launch the Line Manager, or clicking the icon on the PowerPack Ribbon.



Then clicking the Off button to disable the override.