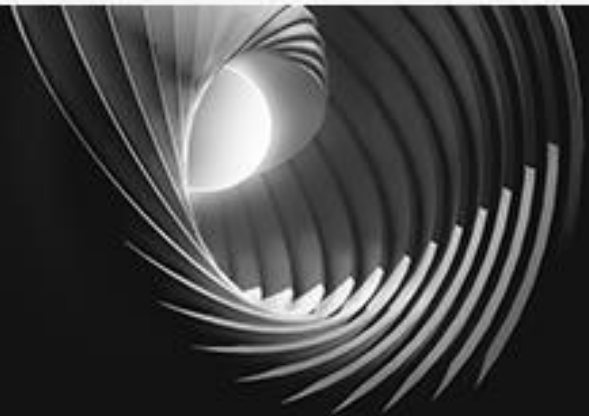




# What's New

## PowerPack for Vault 2025



# Table of Contents

<b>1. General Information About Version 2025 .....</b>	<b>3</b>
1.1. Compliancy with Autodesk Vault 2025 .....	3
1.2. Installation .....	3
<b>2. New Commands .....</b>	<b>4</b>
2.1. Life Cycle Management .....	4
2.2. Mass Release .....	7
<b>3. Improvements.....</b>	<b>8</b>
3.1. Additional settings for the export path .....	8

# 1. GENERAL INFORMATION ABOUT VERSION 2025

The 2025 version of the **PowerPack for Vault** comes with new features, along with improvements on the existing ones:

- Life Cycle Management – Visual aid
- Mass release of files – Batch process
- Improvements for Export Structure Job

The users of Autodesk Vault versions 2024 and 2025 will benefit from these novelties from the **PowerPack for Vault 2025**, as this version can be installed on both versions of the platform.

## 1.1. COMPLIANCY WITH AUTODESK VAULT 2025

The **PowerPack for Vault 2025** is compliant with **Autodesk Vault Client 2024** and **2025 versions**.

The PowerPack for Vault 2025 can be installed using the Setup PowerPack for Vault 2025. The setup will install version 2025 of the PowerPack on Vault 2024 and 2025, if these were previously installed.

## 1.2. INSTALLATION

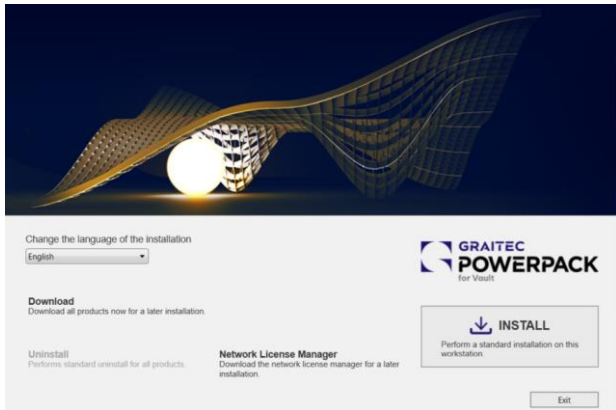
Regarding the installation of the PowerPack version 2025, please follow the next guidance.

**NOTE:** *The 2024 version of the PowerPack for Vault does not require uninstallation.*

1. Download the **PowerPack for Vault 2025** setup from Graitec Advantage account or from Graitec website.



2. After downloading, double-click to open the **PowerPack for Vault 2025** setup and proceed by clicking the **Install** button.



*PowerPack for Vault 2025 installer*

3. Before the installation starts, the End User License Agreement needs to be accepted to proceed further.

**NOTE:** *If Vault 2023, 2024 and 2025 versions are installed on the same computer, and version 2024.1 of the PowerPack for Vault is installed as well, the 2025 setup will automatically update the version of the PowerPack for 2024 platform. Therefore, for Vault 2023, the 2024.1 PowerPack version will remain installed, and for Vault 2024 and 2025, version 2025 of the PowerPack will be installed.*

## 2. NEW COMMANDS

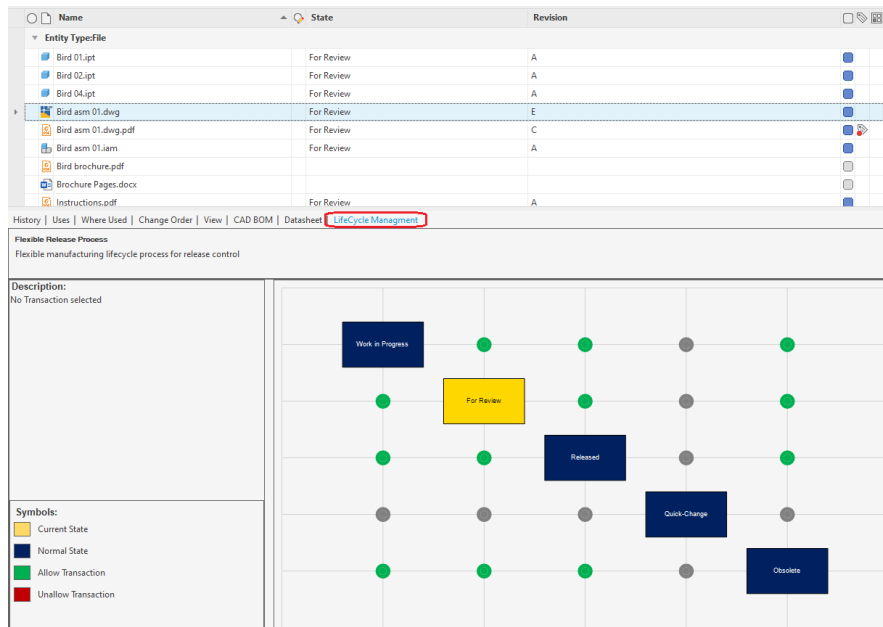
For version 2025 we have focused to simplify more the management of files in Vault offering a better user experience and speeding up processes.

To achieve that we have created a visual aid for designing and managing the life cycles and we have enabled a process of batch release of files.

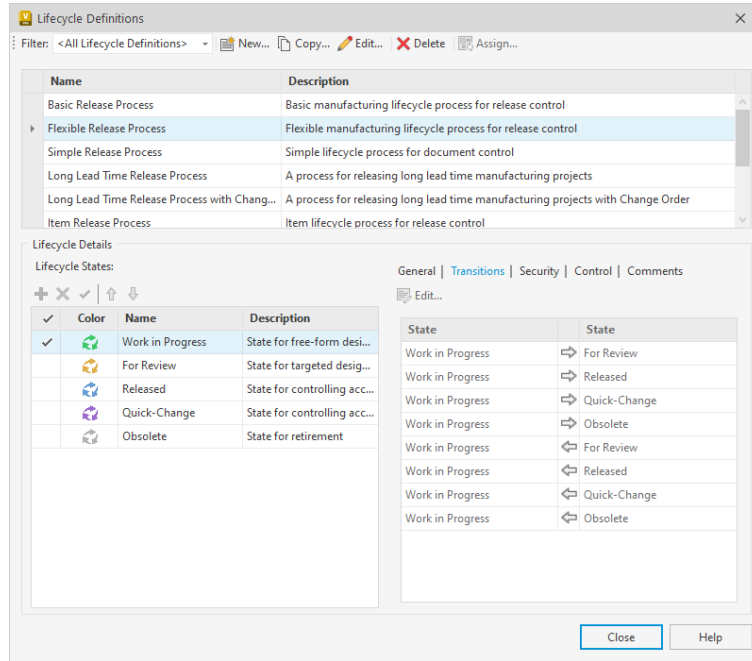
### 2.1. LIFE CYCLE MANAGEMENT

With this function/middleware, the user can design and fully define the lifecycle workflow, permissions, and actions via a view type diagram and then push the final output to Vault. This can also be used to edit existing or in use workflows in Vault.

The **Life Cycle management** diagram is available in the Preview Pane mode, under a new Tab, when a file is selected.



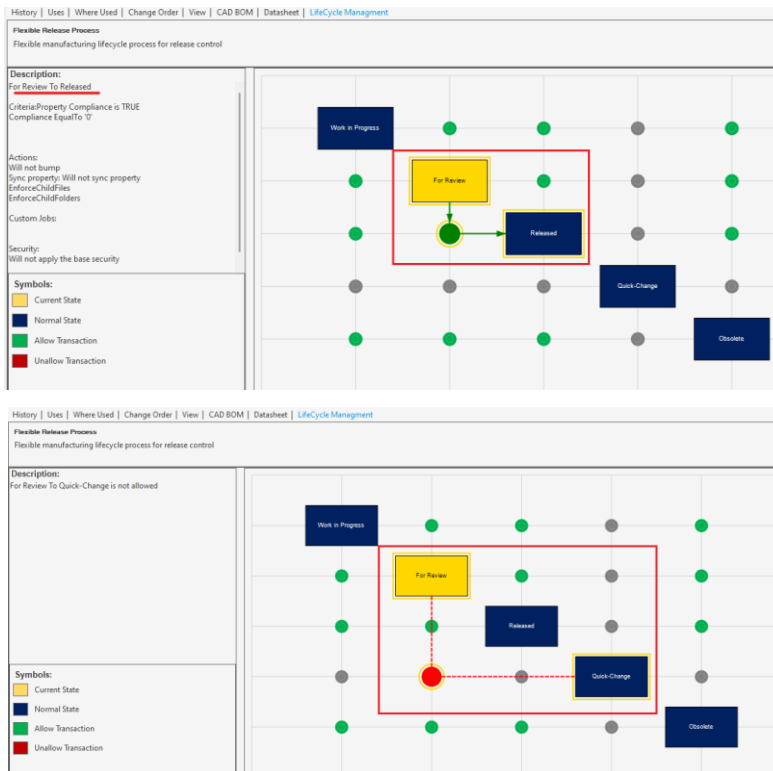
The diagram is the visual translation of the transitions available in the LifeCycle definitions, and the arrows define the direction of the flow. The matrix is set according to user's permissions.



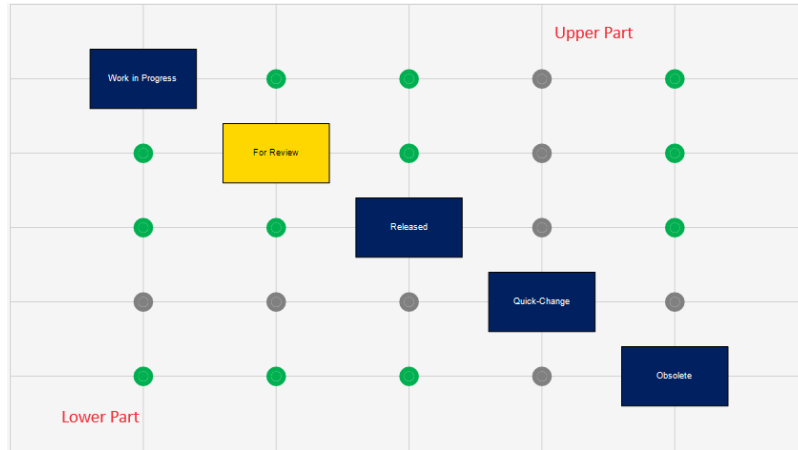
This means that the dots in the matrix are showing if the lifecycle stage change is available or not.

**A green dot means that the change from a stage to another is allowed.**

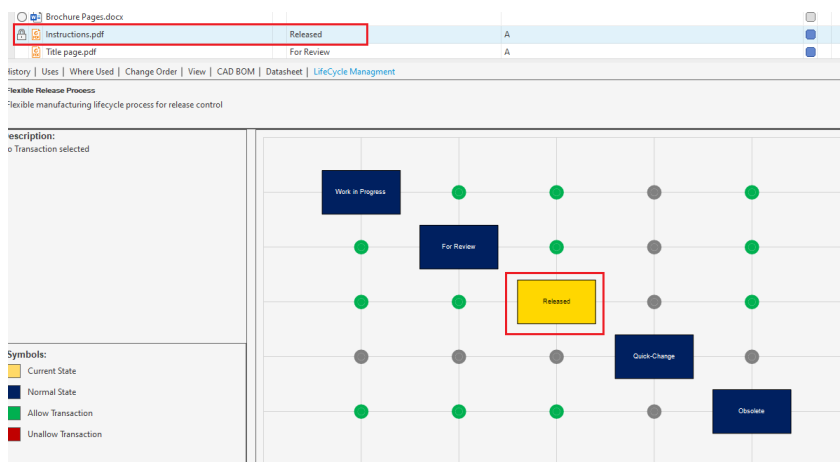
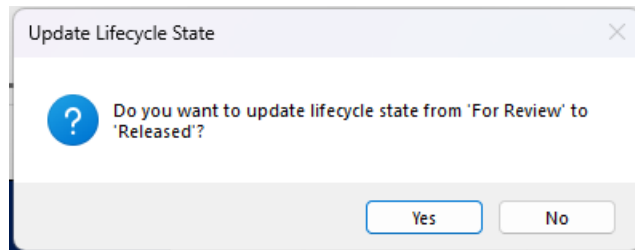
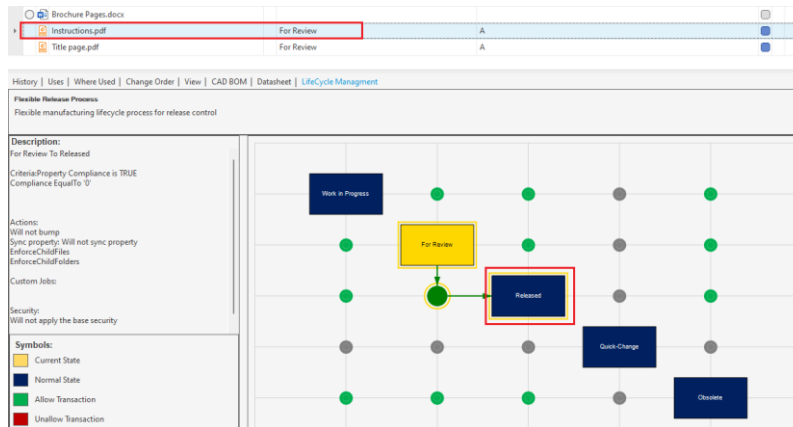
**A grey dot means that the change from a stage to another is Not allowed.**



The matrix is divided into Upper Part and Lower Part, implying that life cycle management can proceed either from top to bottom on the lower side of the diagram or from bottom to top on the upper side of the diagram, traversing various states.



To update the state of a file using the diagram, choose the file you wish to update and double-click on the state to which you want to move the file.



## 2.2. MASS RELEASE

With Vault out of the box, when a change order is approved, all the attached files must be manually released. This could involve a process with potentially 100s of files.

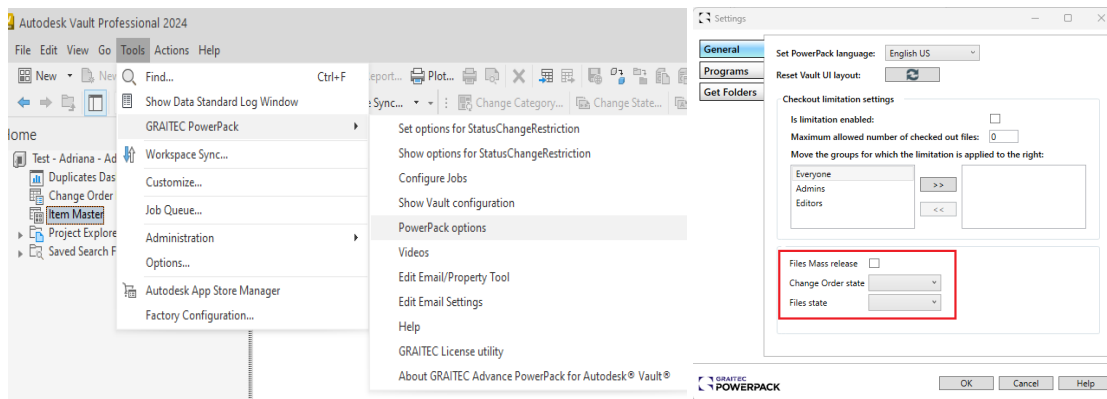
To speed up the process and avoid losing time, we have enabled a batch process called Mass Release.

The Mass Release of files is a batch release process enabling users to automatically release files when the change order status changes. Additionally, it permits users to specify the state through which the files will transition upon release.

The options to enable and configure the process are available under PowerPack Options -> General Settings.

To enable this process, a parameter has been created, the **Files Mass parameter**. This parameter will trigger the batch release of files.

In PowerPack Options, in the General tab, Files mass release option is available here:

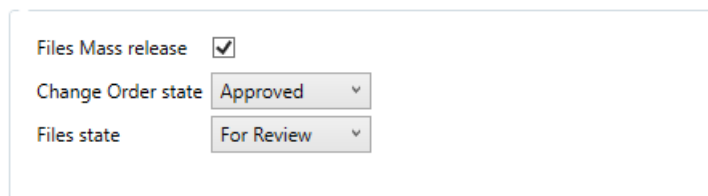


To release the files, 2 conditions must be fulfilled:

- Parameter must be checked.
- The Change Order must arrive in the state set by the user – in general is the approved state.

The **Change Order State combo box** will allow the user to select the state of the change order when the batch files release will be triggered.

The **Files State combo box** will allow the user to select the state that the files will have when the mass release happens.



### 3. IMPROVEMENTS

In this version, responding to user feedback, we dedicated efforts to improve the Export Structure Job command.

#### 3.1. ADDITIONAL SETTINGS FOR THE EXPORT PATH

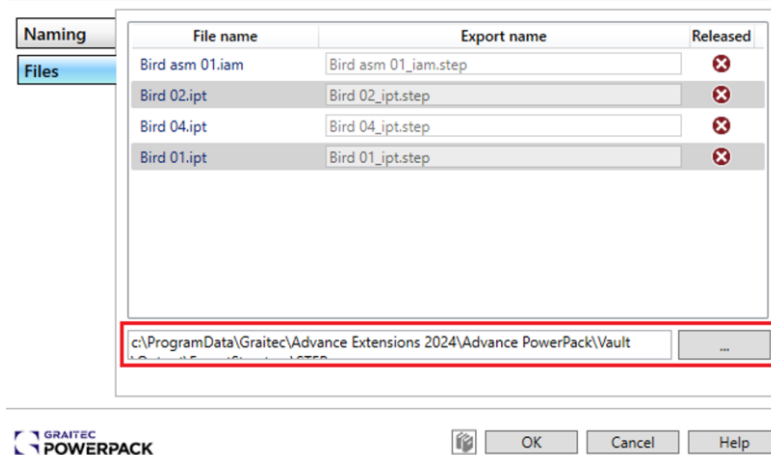
Export structure job functionality allows from version 2025 to add a destination path directly in the Export Structure settings dialog.

This improvement will avoid a supplementary task for the user, to edit the XML file that contains the destination path for the exported files.

The default path set by the PowerPack is:

c:\ProgramData\Graitec\Advance Extensions 2024\Advance PowerPack\Vault\Output\ExportStructure\PDF(DXF/STEP)

The path can be modified by clicking the three dots button located at the bottom-right corner of the settings dialog, within the Files tab. This updated path will be retained for all future exports.



The advantage of this new option is that the user no longer needs to manually edit the XML; instead, they can directly utilize the option within the dialog.